

NOTES:

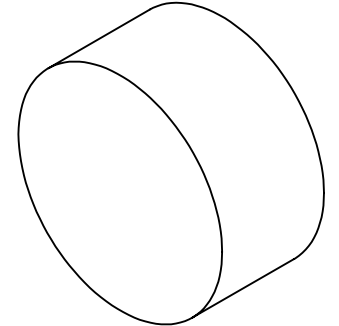
1. SUBSTRATE:
FUSED SILICA
2. SURFACE S2 TO BE PARALLEL TO S1 TO WITHIN <3 ARCMIN
3. COATING (APPLY ACROSS CLEAR APERTURE)

Surface 1: Rabs: >99% @ 1064nm, Tabs: >95% @ 532nm
 Surface 2: Rabs: <0.5% @ 532nm

DAMAGE THRESHOLD, PULSED

Surface 1: 7.5 J/cm² @ 1064nm, 20ns, 20Hz 7.5 J/cm² @ 532nm, 20ns, 20Hz

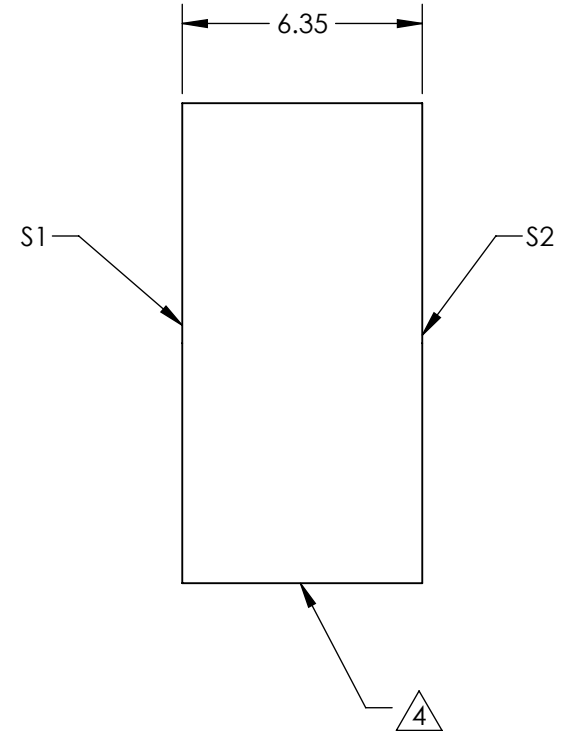
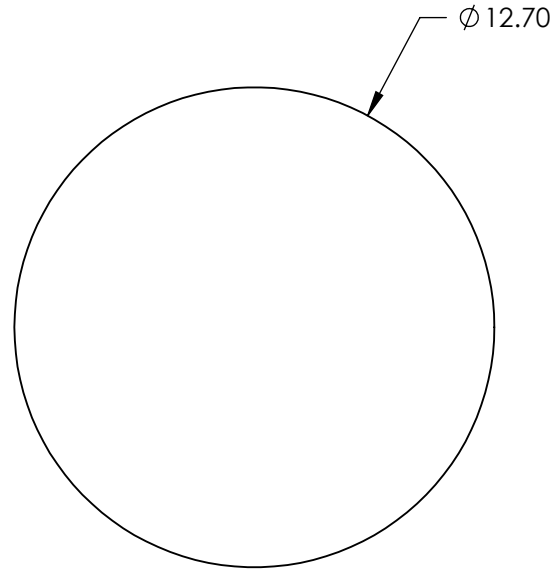
Surface 2: 10 J/cm² @ 532nm, 20ns, 20Hz



4. FINE GRIND SURFACE

5. FOCAL LENGTH TOLERANCE:

6. ROHS COMPLIANT



**FOR INFORMATION ONLY:
DO NOT MANUFACTURE
PARTS TO THIS DRAWING**

SPECIFICATIONS SUBJECT TO CHANGE WITHOUT NOTICE
 DIMENSIONS ARE FOR REFERENCE ONLY

	S1	S2
SHAPE	PLANO	PLANO
SURFACE QUALITY	10-5	10-5
CLEAR APERTURE	>85 %	>85 %
COATING APERTURE	>85 %	>85 %
BEVEL	PROTECTED AS NEEDED	PROTECTED AS NEEDED



ALL DIMS IN mm

EO® **Edmund Optics**®

TITLE

12.7mm DIA., 532nm T, 1064nm R 0DEG
 Harmonic Separator

DWG NO

22674

SHEET
7 OF 8