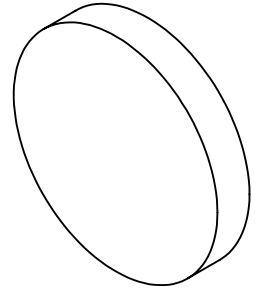


NOTES:

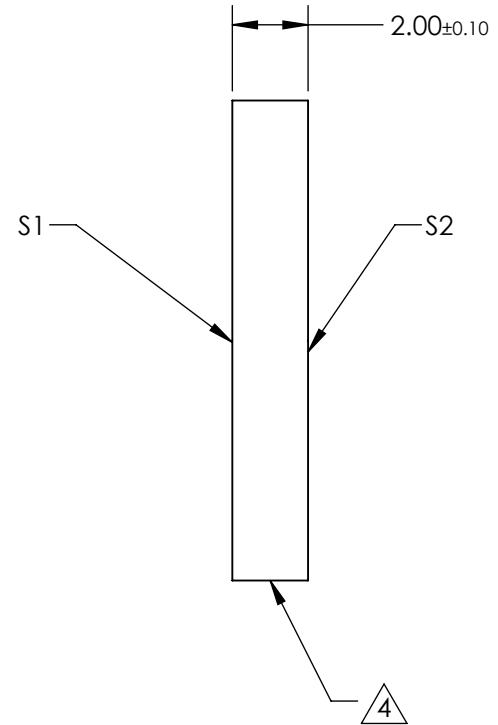
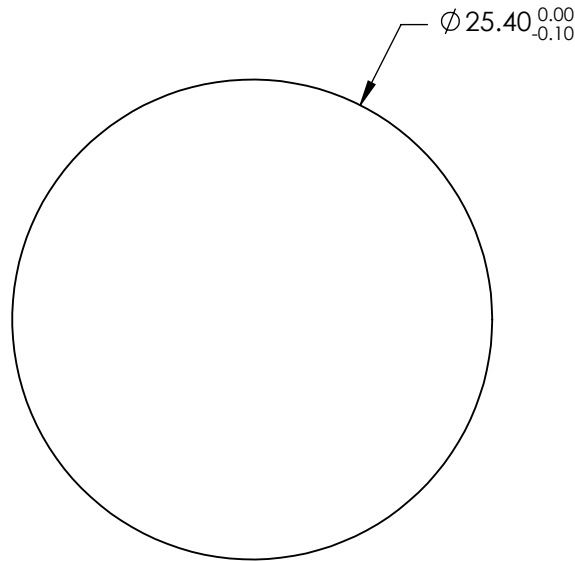
1. SUBSTRATE:
SILICON (Si)
2. SURFACE S2 TO BE PARALLEL TO S1 WITHIN <3 ARCMIN
3. COATING (APPLY ACROSS CLEAR APERTURE)

S1&S2: BBAR(1650-3000nm)
Ravg <1% @ 1650 - 3000nm, Rabs <2% @ 1650 - 3000nm



4. FINE GRIND SURFACE

5. ROHS COMPLIANT

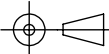


**FOR INFORMATION ONLY:
DO NOT MANUFACTURE
PARTS TO THIS DRAWING**

SPECIFICATIONS SUBJECT TO CHANGE WITHOUT NOTICE
DIMENSIONS ARE FOR REFERENCE ONLY

	S1	S2
SHAPE	PLANO	PLANO
CLEAR APERTURE	Ø 22.86	Ø 22.86
SURFACE QUALITY	60-40	60-40
SURFACE FLATNESS	1λ	1λ
BEVEL	PROTECTED AS NEEDED	PROTECTED AS NEEDED

THIRD ANGLE PROJECTION



ALL DIMS IN

mm



Edmund Optics®

TITLE

25.4mm Dia. x 2mm Thickness 1.65-3µm
Coated Silicon Window

DWG NO

20029

SHEET
1 OF 1