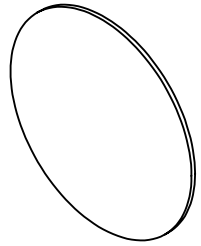


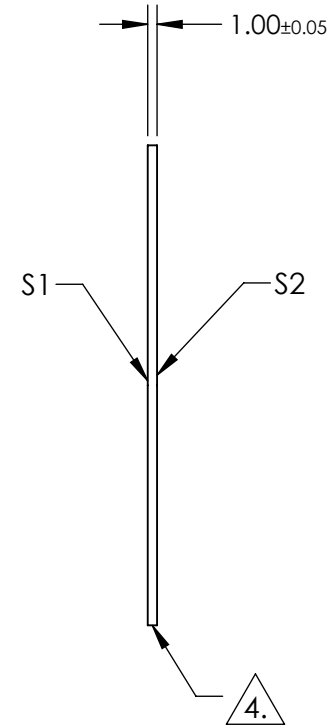
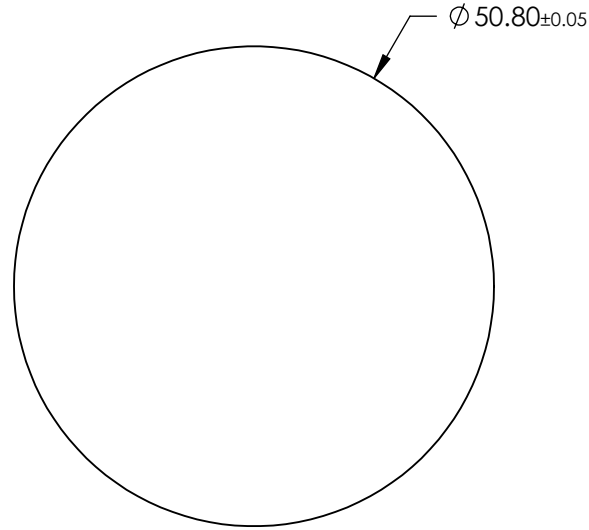
NOTES:

1. SUBSTRATE:  
SAPPHIRE (AL2O3)
2. SURFACE S2 TO BE PARALLEL WITH SUFACE S1 TO WITHIN  $\leq 3.5$  ARMIN
3. COATING (APPLY ACROSS CLEAR APERTURE)  
S1 & S2: R(AVG)  $\leq 0.5\%$  @ 600 - 1050nm



4. FINE GRIND SURFACE

5. ROHS COMPLIANT



**FOR INFORMATION ONLY:  
DO NOT MANUFACTURE  
PARTS TO THIS DRAWING**

SPECIFICATIONS SUBJECT TO CHANGE WITHOUT NOTICE  
DIMENSIONS ARE FOR REFERENCE ONLY

	S1	S2
SHAPE	PLANO	PLANO
CLEAR APERTURE	Ø 45.72	Ø 45.72
SURFACE FLATNESS	2λ	2λ
SURFACE QUALITY	80-50	80-50
BIREFRINGENCE (no-ne)	0.008	0.008
BEVEL	PROTECTED AS NEEDED	PROTECTED AS NEEDED

THIRD ANGLE PROJECTION

ALL DIMS IN

mm

 **Edmund Optics®**

TITLE

50.8mm Dia., 1mm Thick, NIR I AR Coated  
Sapphire Window

DWG NO

25415

SHEET  
40 OF 70