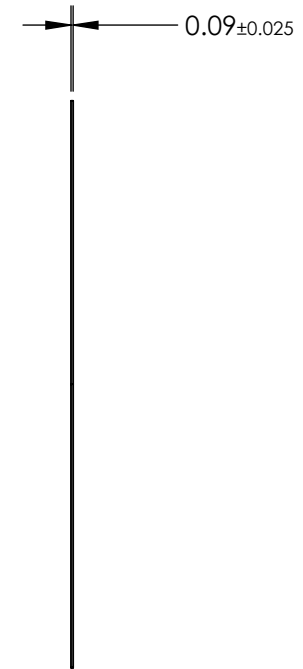
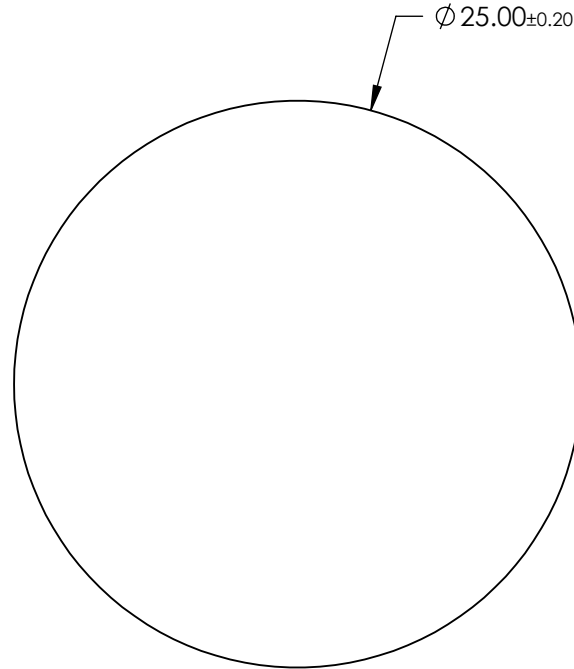
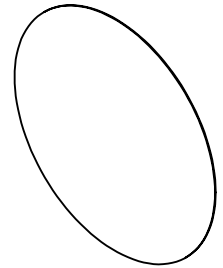


NOTES:

1. SUBSTRATE: SODIUM SILICATE GLASS DOPED WITH SILVER NANOPARTICLES
2. COATING: Uncoated
3. TYPICAL ENERGY DENSITY LIMIT: 10 W/cm<sup>2</sup>
4. EXTINCTION RATIO: >10,000:1
5. WAVELENGTH RANGE: 1500-1600
6. ROHS COMPLIANT



**FOR INFORMATION ONLY:  
DO NOT MANUFACTURE  
PARTS TO THIS DRAWING**

SPECIFICATIONS SUBJECT TO CHANGE WITHOUT NOTICE  
DIMENSIONS ARE FOR REFERENCE ONLY

	S1	S2
SHAPE	PLANO	PLANO
SURFACE QUALITY	40 - 20	40 - 20
TRANSMISSION (%)	>88	>88
ACCEPTANCE ANGLE	±20°	±20°
BEVEL MAX FACE	PROTECTED AS NEEDED	PROTECTED AS NEEDED



ALL DIMS IN

mm



**Edmund Optics®**

TITLE

Ultra-Thin Polarizer, 1550nm, 25mm Dia, Unc.

DWG NO

26652

SHEET  
10 OF 12