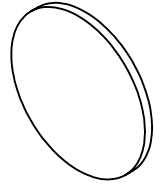


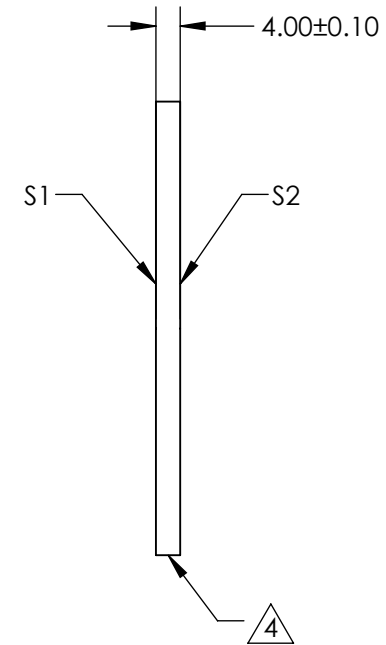
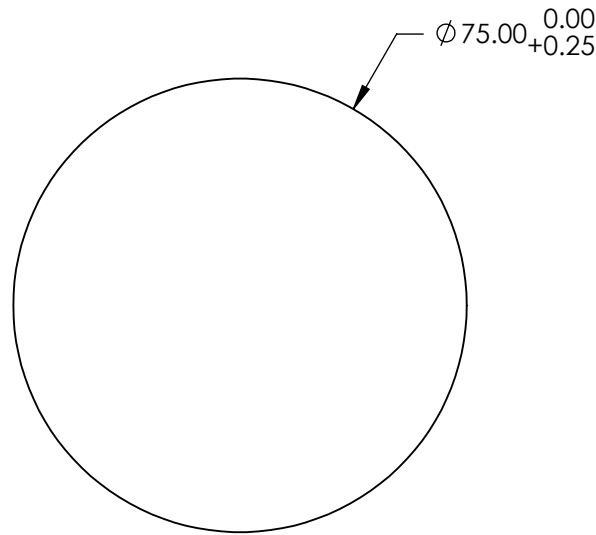
NOTES:

1. SUBSTRATE: N-BK7
2. S2 TO BE PARALLEL TO S1 TO WITHIN <1 ARCMIN
3. COATING (APPLY ACROSS CLEAR APERTURE)
 S1 & S2: BBAR (1650-3000nm)
 R(AVG)<1% @ 1650 - 3000nm @ 0° AOI
 R(ABS) <2% @ 1650 - 3000nm @ 0° AOI



4. FINE GRIND SURFACE

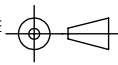
5. ROHS COMPLIANT



**FOR INFORMATION ONLY:
DO NOT MANUFACTURE
PARTS TO THIS DRAWING**

SPECIFICATIONS SUBJECT TO CHANGE WITHOUT NOTICE
DIMENSIONS ARE FOR REFERENCE ONLY

	S1	S2
SHAPE	PLANO	PLANO
SURFACE QUALITY	60 - 40	60 - 40
CLEAR APERTURE	Ø 67.50	Ø 67.50
BEVEL	PROTECTED AS NEEDED	PROTECTED AS NEEDED

THIRD ANGLE PROJECTION 

ALL DIMS IN mm

EO® **Edmund Optics**®

TITLE: 75mm Dia., 1mm Thick, SWIR AR Coated λ/4 N-BK7 Window

DWG NO: 70284

SHEET 5 OF 5